



Play and toy ideas to support communication

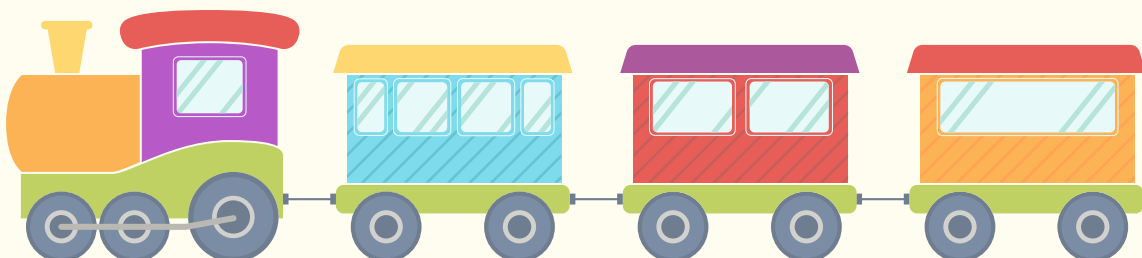
(Gestalt Language Processing friendly)

A gentle note for parents,

Play is where communication grows. For children who learn language through a Gestalt Language Processing (GLP) approach, toys are not about teaching words, they are about shared experiences, joy, and connection.

You don't need lots of toys. You don't need to "test" your child.

You just need to join in, follow their lead, and model language naturally.

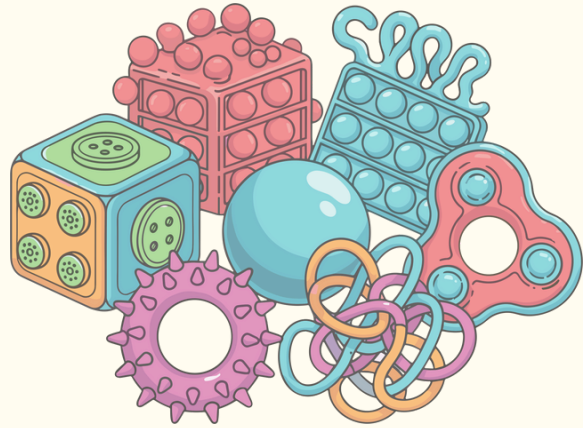


Cause-and-effect toys

These toys help children learn that their actions matter.

Examples:

- Pop-up toys
- Push-button toys
- Spinning toys
- Wind-up toys
- Light-up toys



How to play:

- Sit alongside your child
- Let them explore freely
- Pause and wait
- Repeat actions they enjoy



Language to model (no questions):

- “Uh-oh, it fell !”
- “It’s spinning!”
- “Let’s do it again!”
- “Go fast!”
- “It’s all done”



Puzzles and matching toys

Great for focus, visual processing, and shared attention.

Examples:

- Wooden puzzles
- Shape sorters
- Matching cards
- Posting toys



How to play:

- Let your child choose the puzzle
- Help only when needed
- Accept hand-leading as communication

Language to model:

- “Let’s find it”
- “Oh, it’s missing”
- “I need help”
- “I found it!”



Pretend play toys

Pretend play supports sequencing, memory, and early storytelling.

Examples:

- Animal figures
- Cars and roads
- Dolls or characters
- Play food



How to play:

- Copy what your child does
- Repeat the same actions
- Keep play simple and predictable

Language to model:

- “Ready... steady... go!”
- “Uh-oh, it fell”
- “Let’s eat now!”
- “I want more!”



A reminder

Your child does not need to respond or repeat words. Hearing meaningful language over and over again is how learning happens.



*Connection
over
Compliance*